



Tesla, Inc.
Service Bulletin

Inspect Accelerator Pedal

SB-24-33-003
April 18, 2024

Classification		Section/Group	Mobile Service	Configuration
Recall Bulletin		33 - Brakes	Can Perform (where permitted)	All
Model	Model Year	Country/Region	Build Location	
Cybertruck	2024	North America	Giga Texas	

The model(s) and model year(s) listed are a general approximation of the affected VIN list. Refer to the VIN/Bulletin Tracker or Customer/Vehicle profile to determine applicability of this bulletin for a particular vehicle.

Recall Bulletin: Recall Bulletins are mandatory service procedures that, unless they can be completed via a software update that a customer installs through the normal course of ownership, must be carried out by Tesla-certified Service Centers. Recall work performed by uncertified technicians could lead to unsafe conditions or voided warranty provisions.

Condition

On affected Cybertruck vehicles, when a high amount of force is applied to the accelerator pedal pad, the pad may dislodge and become trapped in the interior trim above the pedal.

Correction

Rework or replace the accelerator pedal assembly such that the assembly meets specifications and ensures sufficient retention force between the pad and accelerator pedal to prevent the pad from dislodging.

Correction Description	Correction	Time
Inspect Accelerator Pedal; Secure Pedal Pad With Rivet	S012433003	0.12
Inspect Accelerator Pedal; Replace Accelerator Pedal Assembly (Rivet Pre-Installed)	S022433003	0.12
Inspect Accelerator Pedal; Replace Accelerator Pedal Assembly And Secure Pedal Pad With Rivet	S032433003	0.18

	Part Number	Description	Quantity
If Necessary	1064496-00-A	BLIND RIVET,5/32X4.5-9.0 GRIP,AL/SS	1
	1250695-99-B	ACCELERATOR PEDAL FLOOR MOUNTED, 16 DEG, OPTION	1

These part numbers were current at the time of publication. Use the revisions listed or later, unless otherwise specified in the [Parts Catalog](#).

Special Tools	Part Number	Description
	2056423-00-A	PEDAL REWORK KIT (INCLUDES DRILLING JIG AND DRILL BIT SPACER)
	1126494-00-A	SET, DRILL BIT, 1-13MM
	1054713-00-A	KIT, RIVET ASSORTMENT WITH GUN
	1806674-00-A	VACUUM, SHOP
	—	INSPECTION MIRROR (IN SHOP TOOLBOX)

Shop Supplies Isopropyl Alcohol (IPA) wipes

Procedure

⚠ WARNING: Use only the PEDAL REWORK KIT (listed in the Special Tools section) to perform the rework described in this procedure. DO NOT attempt to perform this procedure without the drilling jig provided in the PEDAL REWORK KIT.

1. Open the LH front door and move the LH front seat fully rearward.
2. If a floormat is installed in the driver footwell, remove it from the vehicle.
3. Clean the surface of the aluminum pedal pad with an IPA wipe, making sure to remove all debris from the pad.
4. Measure the distance between the bottom of the aluminum accelerator pedal pad and the bottom of the pedal backing (Figure 1).

⚠ WARNING: DO NOT manually reposition the pedal pad under any circumstances. Measure the distance, and then perform the procedure as instructed.

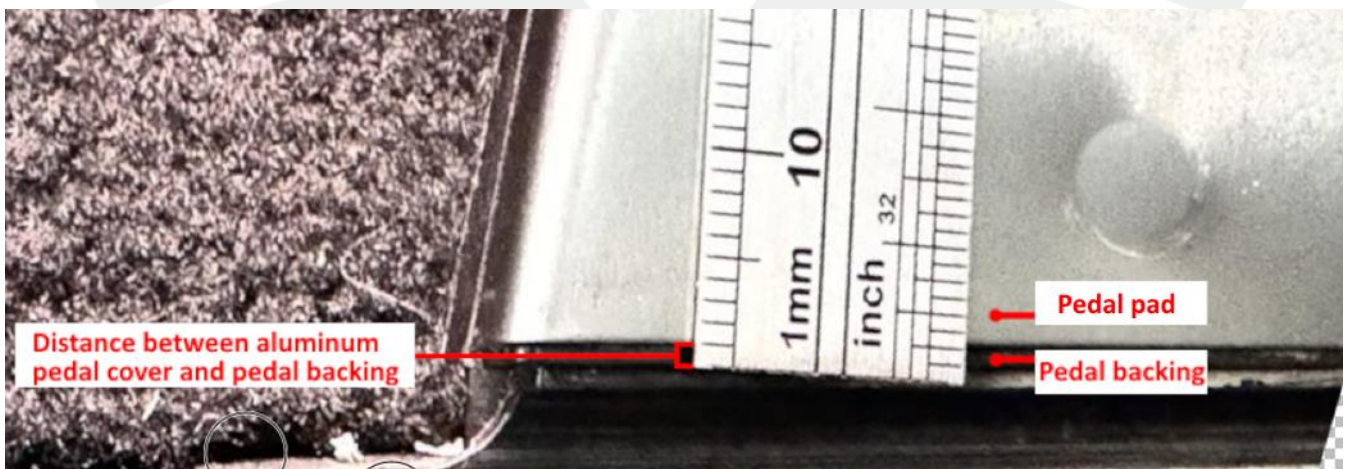


Figure 1

- If the measured distance is 5 mm or greater, replace the accelerator pedal assembly (refer to Service Manual procedure [3325020022](#)). Afterwards, discontinue this procedure and use bulletin correction code S022433003.

⚠ WARNING: Make sure that the replacement accelerator pedal assembly has a rivet installed on the bottom end of the pedal pad (Figure 2). If a rivet is not installed on the replacement pedal assembly, install the replacement pedal assembly on the vehicle, and then continue to step 5 to install a rivet on the replacement pedal assembly.

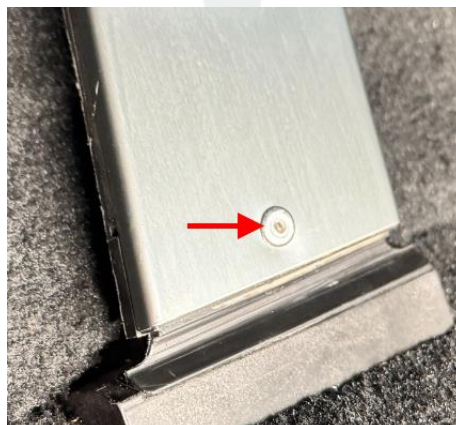


Figure 2

- If the measured distance is less than 5 mm, continue to step 5.

5. Position the drilling jig (provided in the pedal rework kit) on the accelerator pedal assembly, making sure the bottom of the jig aligns with the bottom of the pedal (Figure 3).

⚠ CAUTION: The drilling jig is designed to contact a reinforcement tab (circled, Figure 4) on the back of the pedal assembly, at which point, the jig will no longer slide downwards. Do not force the jig past this point, as doing so could damage the pedal assembly.



Figure 3



Figure 4

6. Install a 4 mm drill bit in the cordless drill, making sure that 35 mm to 40 mm of the drill bit is protruding from the drill (Figure 5).

⚠ CAUTION: No less than 35 mm and no more than 40 mm of the drill bit may protrude from the drill. An exposed drill bit length outside of this range might prevent proper rivet installation or damage the pedal assembly.

ℹ TIP: The drill bit spacer (provided in the pedal rework kit) can be used to help achieve the 35 mm–40 mm exposed drill bit length.

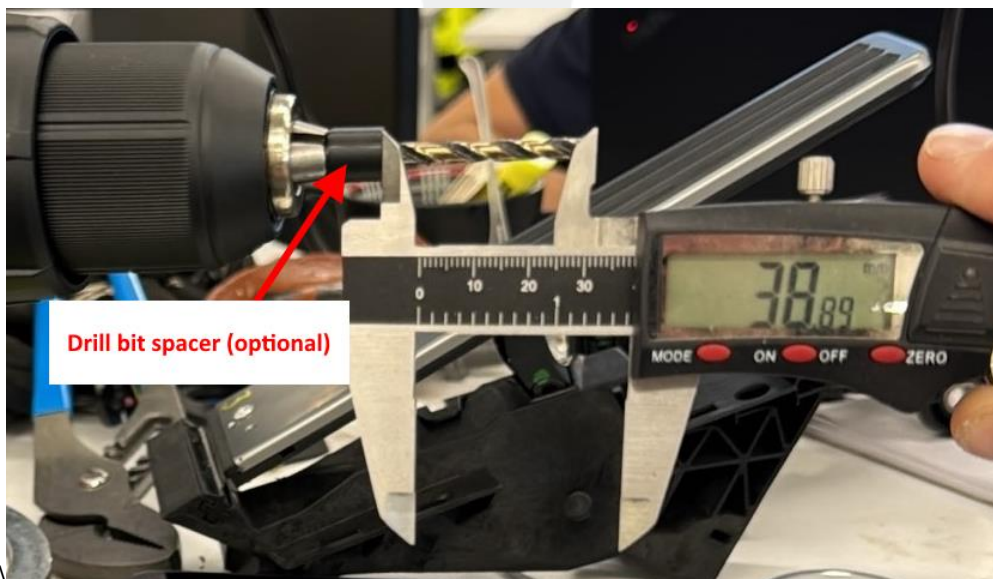


Figure 5

- Put on Personal Protective Equipment (PPE) appropriate for drilling work, such as gloves and eye protection.

⚠ WARNING: Failure to use proper PPE can result in personal injury.

- Position the drill bit in the hole of the drilling jig (Figure 6), and then drill through the pedal, making sure the back side of the pedal is drilled through.

ℹ TIP: Use an inspection mirror to confirm that the back side of the pedal has been drilled through.



Figure 6

- Remove the drilling jig, and then vacuum up any drilling debris around the base of the pedal.
- Install a 4 mm rivet bit in the rivet gun, and then position the rivet (1064496-00-A) on the rivet bit.
- Install the rivet that attaches the pedal pad to the pedal backing (Figure 7).



Figure 7

- Vacuum up any remaining debris on the footwell carpet around the base of the accelerator pedal and behind the pedal assembly. Also vacuum and/or wipe both sides of the floormat clean, if one was removed earlier in this procedure.

13. Confirm proper rivet installation:

- The rivet head should be in complete contact with the pedal pad, and slight deformation of the pedal pad is expected (Figure 8).
- Use an inspection mirror to confirm that the rivet mandrel is flush with the back side of the pedal assembly (Figure 9).

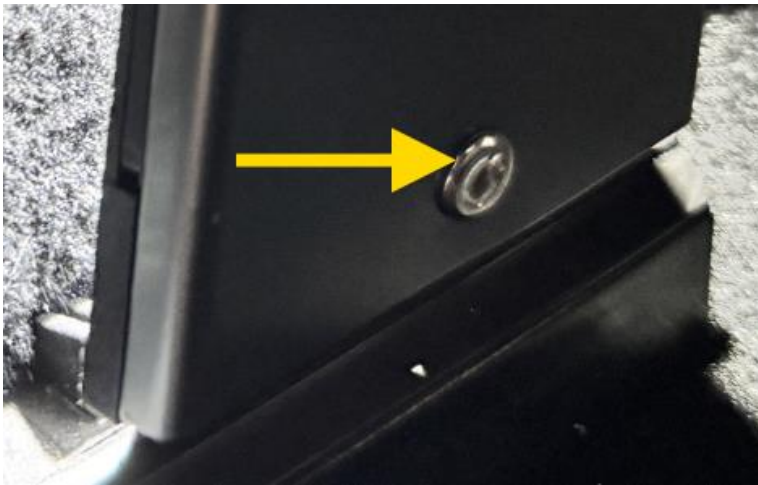


Figure 8



Figure 9

14. Reinstall the floormat, if one was removed.

15. Use the appropriate bulletin correction code:

- Use bulletin correction code S012433003 if the vehicle's existing pedal assembly was riveted.
- Use bulletin correction code S032433003 if a new pedal assembly was installed and then riveted.